



GMT MONTHLY MEMBERSHIP PROGRESS REPORT

Results as of: 5/31/2020

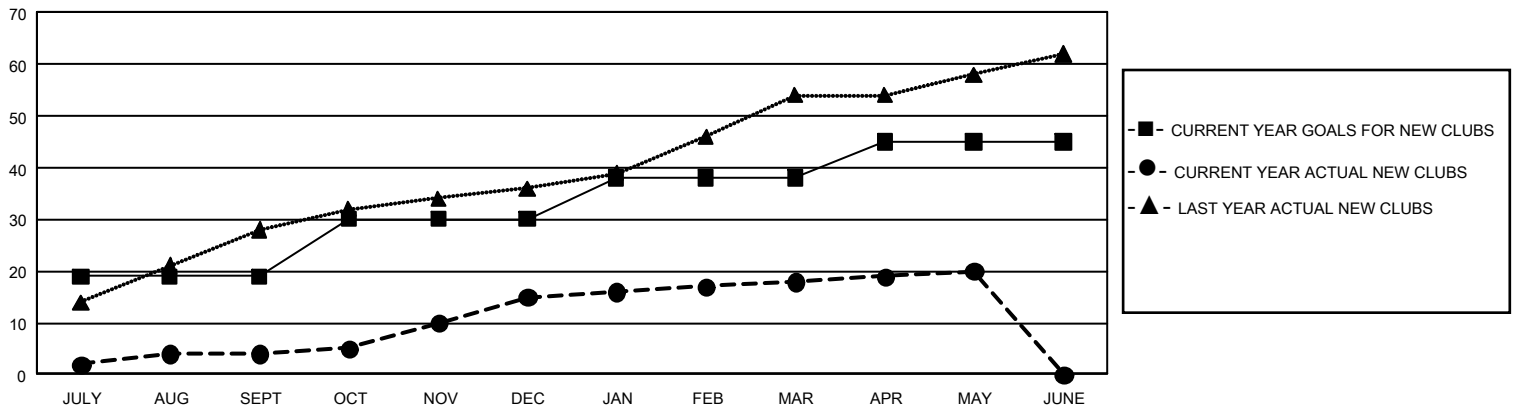
GMT Constitutional Area 6, Group I

GMT: OPEN

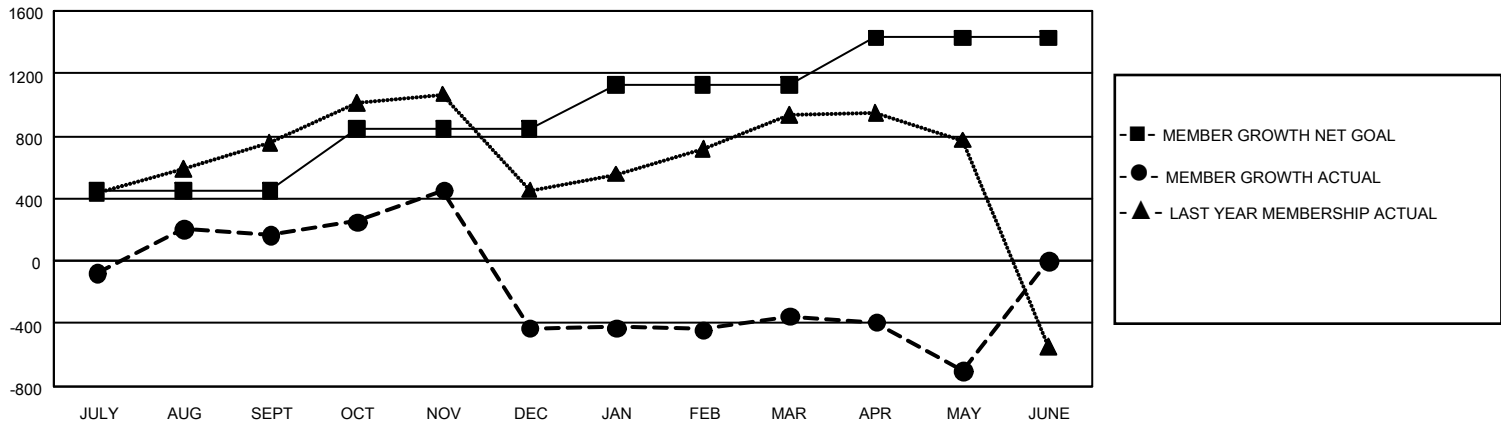
REPORT DOES NOT INCLUDE CLUBS IN UNDISTRICTED AREAS.

Clubs				Members			
RESULTS FOR 2019-2020				RESULTS FOR 2019-2020			
QUARTER	NEW CLUB GOAL	NEW CLUBS	DROPPED CLUBS	QUARTER	MEMBER GROWTH NET GOAL	MEMBER GROWTH ACTUAL	DROPPED MEMBERS ACTUAL (including transfers)
JULY/AUG/SEPT	57	4	3	JULY/AUG/SEPT	1,350	791	577
OCT/NOV/DEC	33	11	13	OCT/NOV/DEC	1,185	735	1,253
JAN/FEB/MAR	24	3	6	JAN/FEB/MAR	840	517	325
APR/MAY/JUNE	21	2	4	APR/MAY/JUNE	915	237	506

GOALS AND ACTUAL NEW CLUBS CUMULATIVE



GOALS AND ACTUAL MEMBERS CUMULATIVE



DROPPED CLUBS: 26	304 CLUBS OF 512 ADDED 1 OR MORE NEW MEMBERS	GENDER DISTRIBUTION
DROPPED MEMBERS		MALE 13,255 (74.13%)
DECEASED 44		FEMALE 4,625 (25.87%)
CLUB CANCELLED 337	CLICK HERE FOR CUMULATIVE MEMBERSHIP DATA	TOTAL FAMILY UNIT MEMBERS 7,860
OTHER 2,280		FAMILY MEMBERS PAYING HALF DUES 4,383
TOTAL 2,661		